

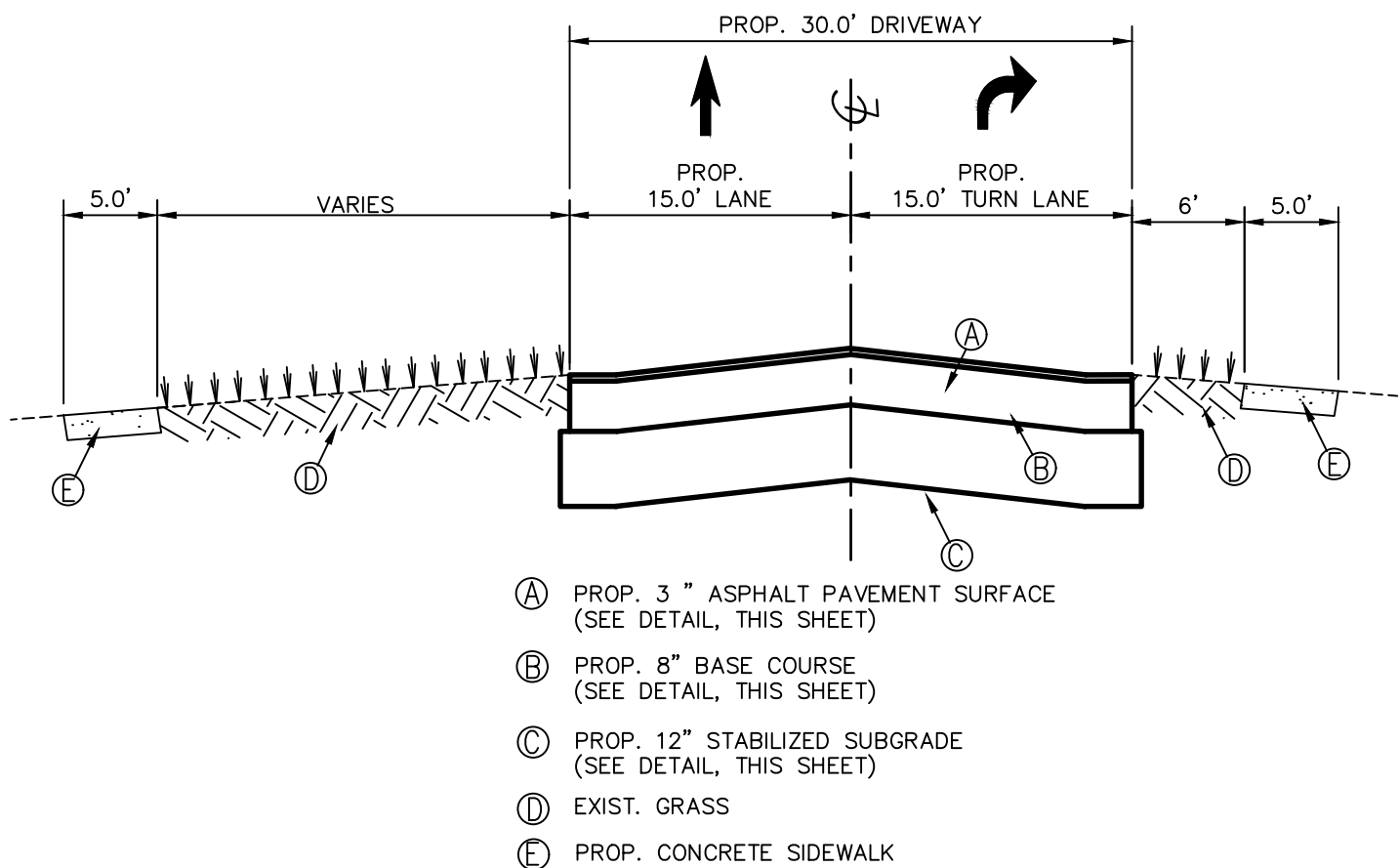
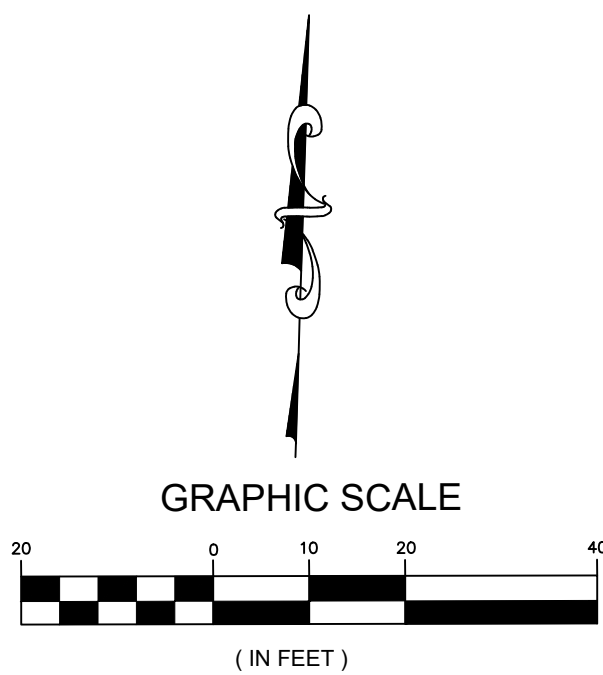


666 N.E. 125th STREET,
SUITE 247
NORTH MIAMI, FL 33161
Phone: 305.720.2079
C.O.A. 33221

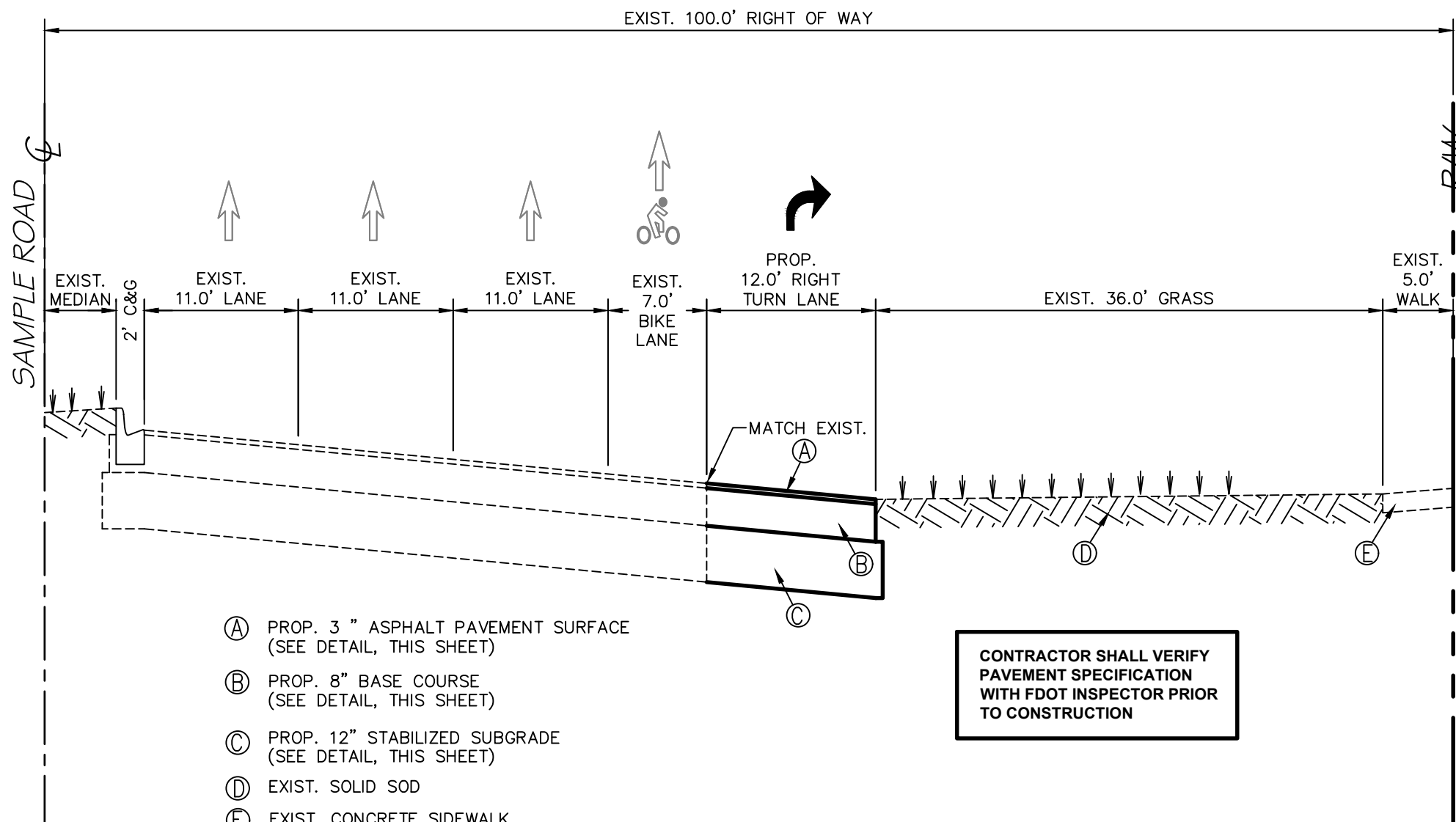


8/18/2025
This item has been digitally signed and sealed by Christopher P. Collins, P.E. on the date adjacent to the seal.

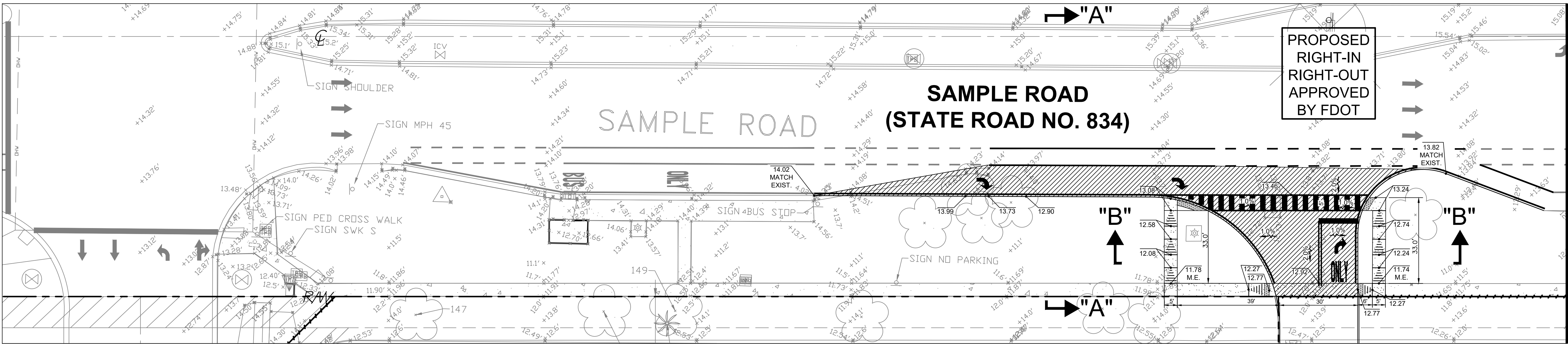
Printed copies of this document are not considered signed and sealed and the signature must be verified on any electronics copies.



SAMPLE ROAD
PROPOSED NEW DRIVEWAY CROSS SECTION "B"-"B"
SCALE: HOR. 1"=10'
VERT. 1"=4'



SAMPLE ROAD
PROPOSED NEW DRIVEWAY CROSS SECTION "A"-"A"
SCALE: HOR. 1"=10'
VERT. 1"=4'



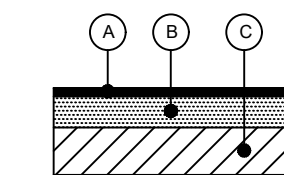
MATCHLINE A-A

SITE SYMBOLS /LEGEND

- (E.P.) EDGE OF PVMT. ELEV. OR GROUND ELEV.
- X% PROP. FLOW DIRECTION AND SLOPE
- +14.40' EXIST. GRADE ELEVATION

HATCH LEGEND

- EXISTING CONCRETE SIDEWALK
- PROPOSED NEW PAVEMENT. CONTRACTOR SHALL MATCH EXISTING PAVEMENT PER FDOT STANDARDS SPECIFICATIONS

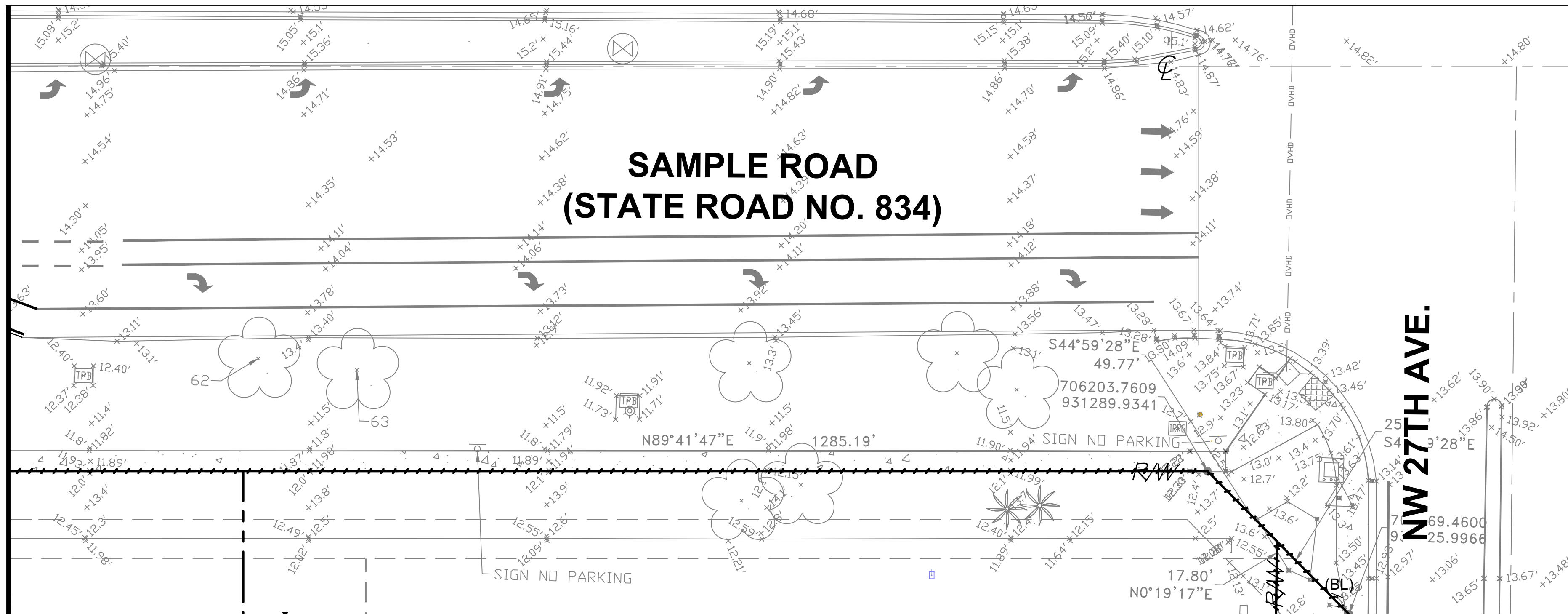


- 3" OPTIONAL BASE GROUP 9 (0809), ASPHALT SHALL BE PLACED IN TWO (2) LIFTS: 2" OF SP-12.5 AND 1" OF SP-9.5.
- 6" CRUSHED LIMESTONE BASE COURSE HAVING A MINIMUM LBR OF 100 AND MINIMUM CARBON CALCIUM CONTENT 70% COMPACTED TO AT LEAST 98% OF THE MODIFIED PROCTOR MAXIMUM DRY DENSITY PER ASTM D-1557, PLACED IN (2) LIFTS, PER MG. PW.
- TYPE B OR C 12" STABILIZED SUB-BASE FILLED WITH MINIMUM LBR OF 40 COMPACTED TO AT LEAST 98% OF THE MODIFIED PROCTOR MAXIMUM DRY DENSITY PER ASTM D-1557.

FDOT PAVEMENT DETAIL

N.T.S.

MATCHLINE A-A



Call 811 or visit sunshine811.com two full business days before digging to have buried facilities located and marked. Check positive response codes before you dig!

Revision	Date	Comment
Revision	Date	Comment
Revision	Date	Comment
Revision	Date	Comment
Revision	Date	Comment
Revision	Date	Comment

Designed by:	C.P.C.
Drawn by:	A.T.S.
Checked by:	C.P.C.
Approved by:	C.P.C.
Scale:	1" = 20'
Date:	05/25/2022
Job No.:	I002
© 2025	

Plans for
FESTIVAL MARKETPLACE
2900 W SAMPLE ROAD
POMPANO BEACH, FLORIDA

GRADING BLOW UP PLAN

Sheet No.
C-7.2